

## Supplementary Material

### *Classification of alpine grasslands in the western Tian Shan Mountains (Kyrgyzstan, Middle Asia)*

Grzegorz Swacha<sup>1</sup>, Sebastian Świerszcz<sup>2,3</sup>, Sylwia Nowak<sup>4</sup>, Marcin Nobis<sup>5</sup> Arkadiusz Nowak<sup>2,6</sup>

<sup>1</sup> Botanical Garden, University of Wrocław, Wrocław, Poland

<sup>2</sup> Botanical Garden, Center for Biological Diversity Conservation, Polish Academy of Sciences, Warszawa, Poland

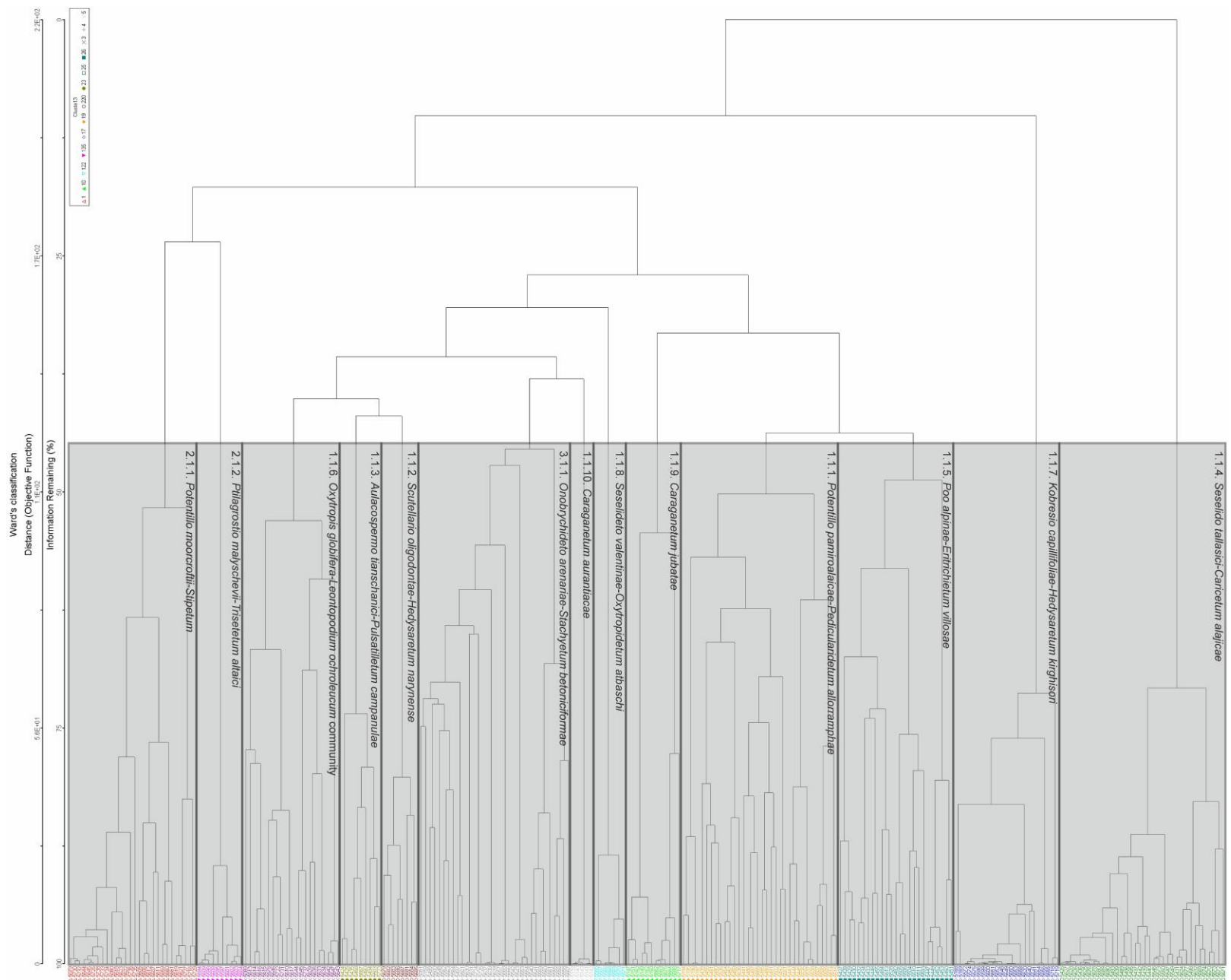
<sup>3</sup> The Franciszek Górski Institute of Plant Physiology, Polish Academy of Sciences, Kraków, Poland

<sup>4</sup> Institute of Biology, University of Opole, Opole, Poland

<sup>5</sup> Department of Taxonomy, Phytogeography and Palaeobotany, Institute of Botany, Jagiellonian University, Kraków, Poland

<sup>6</sup> Department of Botany and Nature Protection, University of Warmia and Mazury in Olsztyn, Olsztyn, Poland

**Corresponding author:** Sebastian Świerszcz ([sebastian.swierszcz@ob.pan.pl](mailto:sebastian.swierszcz@ob.pan.pl))



**Figure S1.** Dendrogram illustrating the assignment of relevé groups identified by Ward's method to particular syntaxonomic units.